

# *Academic Writings and Presentations*

---

# Formats and Tools

**Xing Sheng 盛兴**



**Department of Electronic Engineering  
Tsinghua University**

**[xingsheng@tsinghua.edu.cn](mailto:xingsheng@tsinghua.edu.cn)**

# Softwares

---

- Microsoft Word
- PowerPoint
- Origin / Matlab / Excel
- Photoshop / ImageJ
- ...
- *Always format your report before you send it to your advisors!*

# Word Document

## PERSONAL STATEMENT

I am an associate professor in the Department of Electronic Engineering at Tsinghua University, China. My current research interests are primarily in the exploration of implantable micro- and nano-scale optoelectronic devices, to enable high performance and versatile applications in biomedicine. In particular, I am focused on the development of novel microscale optoelectronic devices for advanced optical neural interfaces. Since 2018, I have published more than papers in peer-reviewed



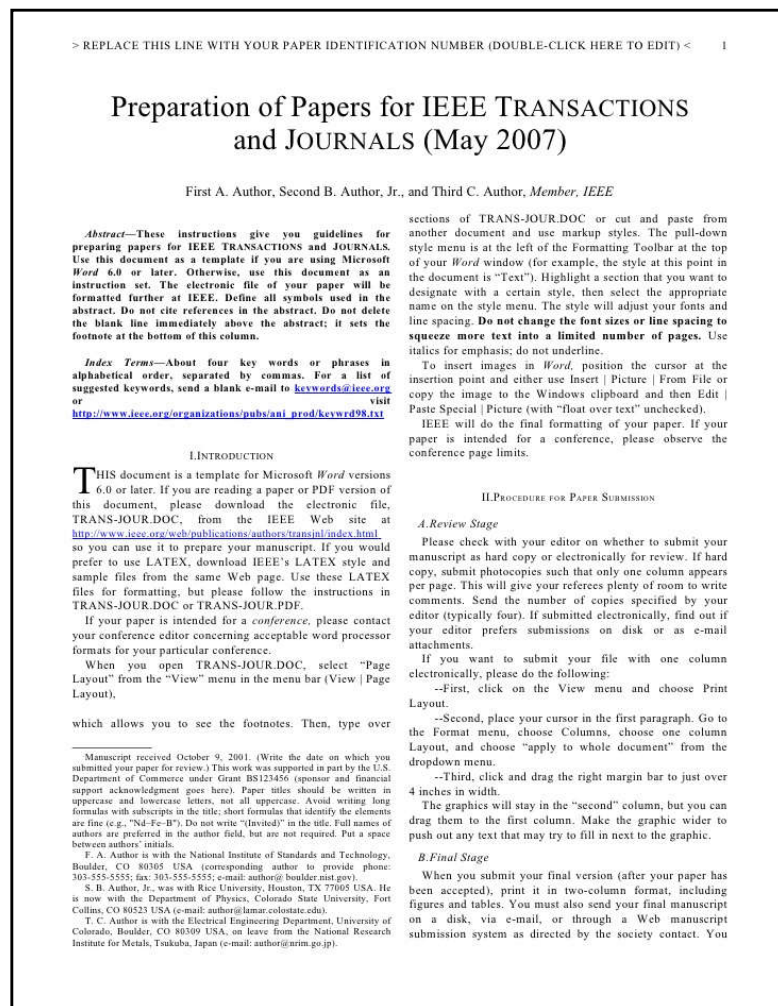
## PERSONAL STATEMENT

I am an associate professor in the Department of Electronic Engineering at Tsinghua University, China. My current research interests are primarily in the exploration of implantable micro- and nano-scale optoelectronic devices, to enable high performance and versatile applications in biomedicine. In particular, I am focused on the development of novel microscale optoelectronic devices for advanced optical neural interfaces. Since 2018, I have published more than papers in

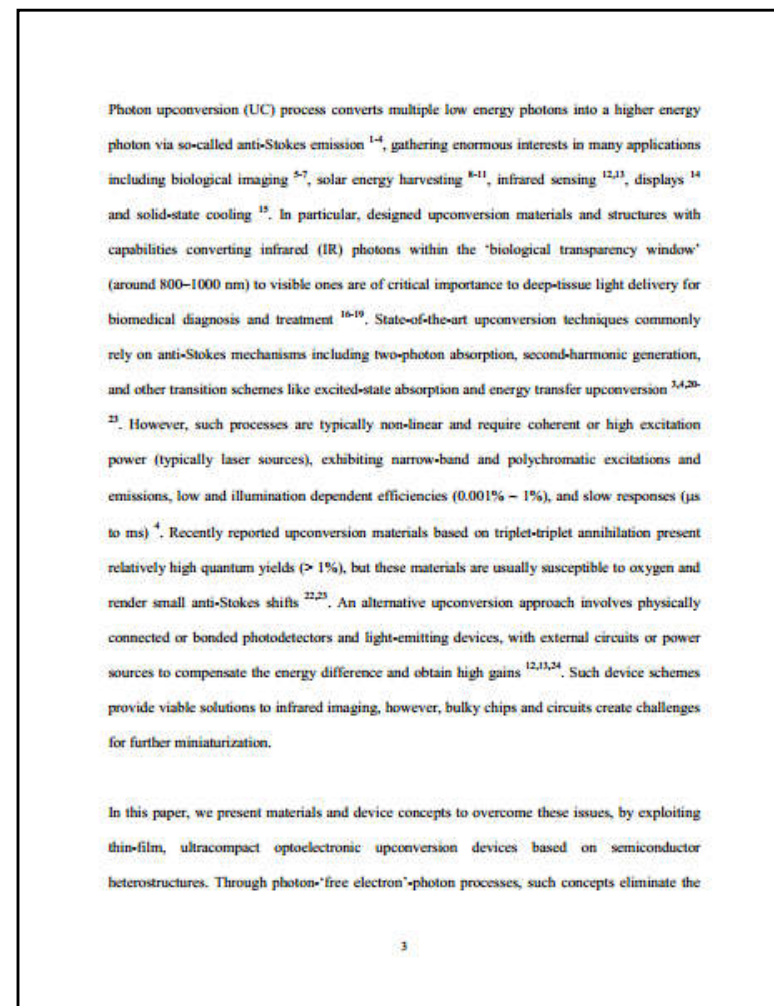


**Be consistent with your format, and follow the guidelines**

# Word Document



**IEEE Template**  
double-column, single-spaced



**ACS Template**  
single-column, double-spaced

# PowerPoint Slides

### An example slide

- Lasers on different substrates
  - electrical injection
  - continuous wave operation at room temperature

The first plot shows Emission power (a.u.) vs Current (mA) for In/Ag alloy (red), GaAs (black), and SU-8 (blue). The second plot shows Intensity (a.u.) vs Wavelength (nm) for In/Ag alloy (red) and GaAs (black) at I = 60 mA. A blue arrow indicates a shift in wavelength with temperature:  $\Delta\lambda \sim 0.1 \text{ nm/K}$ .

X. Sheng, et al., Laser & Photon. Rev. 9, L17 (2015) 18



### Next Week's Plan

- Colormap.
- Simulate 10000 rays.



### Investigation of the light emission properties and carrier dynamics in wavelength InGaN/GaN multiple-quantum well light emitting diodes

The slide includes a band diagram of InGaN/GaN MQWs, a list of sample parameters (p-type GaN, n-type GaN, n-type AlGaN, Undoped GaN, Sapphire), a formula for PL intensity:  $I_{PL}(E) = \frac{\tau_{rad}}{1 + \exp\left(\frac{E - E_0}{k_B T}\right)}$ , and several plots showing PL intensity vs photon energy and PL intensity vs wavelength for different samples and temperatures.



### Lorem ipsum dolor amet commodo magna eros quis urna.

- Lorem ipsum dolor sit amet, consectetur adipiscing elit. Maecenas porttitor congue massa. Fusce posuere, magna sed pulvinar ultricies, purus lectus malesuada libero, sit amet commodo magna eros quis urna.
- Nunc viverra imperdiet enim. Fusce est. Vivamus a tellus.
- Pellentesque habitant morbi tristique senectus et netus et malesuada fames ac turpis egestas. Proin pharetra nonummy pede. Mauris et orci.
- Lorem ipsum dolor sit amet, consectetur adipiscing elit. Maecenas porttitor congue massa. Fusce posuere, magna sed pulvinar ultricies, purus lectus malesuada libero, sit amet commodo magna eros quis urna.
- Nunc viverra imperdiet enim. Fusce est. Vivamus a tellus.
- Pellentesque habitant morbi tristique senectus et netus et malesuada fames ac turpis egestas. Proin pharetra nonummy pede. Mauris et orci.



# Punctuations

A, C	<b>Capital letters</b>	marks the beginning of a sentence
.	<b>Full stop</b>	marks the end of a sentence
,	<b>Comma</b>	separates a list of similar words
?	<b>Question mark</b>	shows question at the end of a sentence
!	<b>Exclamation mark</b>	expresses strong emotion
“”	<b>Quotation marks</b>	shows what someone said or wrote
’	<b>Apostrophe</b>	shows that one or more letters are missing
()	<b>Brackets</b>	enclose extra information in a sentence
:	<b>Colon</b>	introduces lists or direct speech
;	<b>Semicolon</b>	connects independent clauses
-	<b>Hyphen</b>	joins two words together
/	<b>Slash</b>	shows alternatives in a sentence
...	<b>Ellipsis</b>	shows that parts of sentences are left out

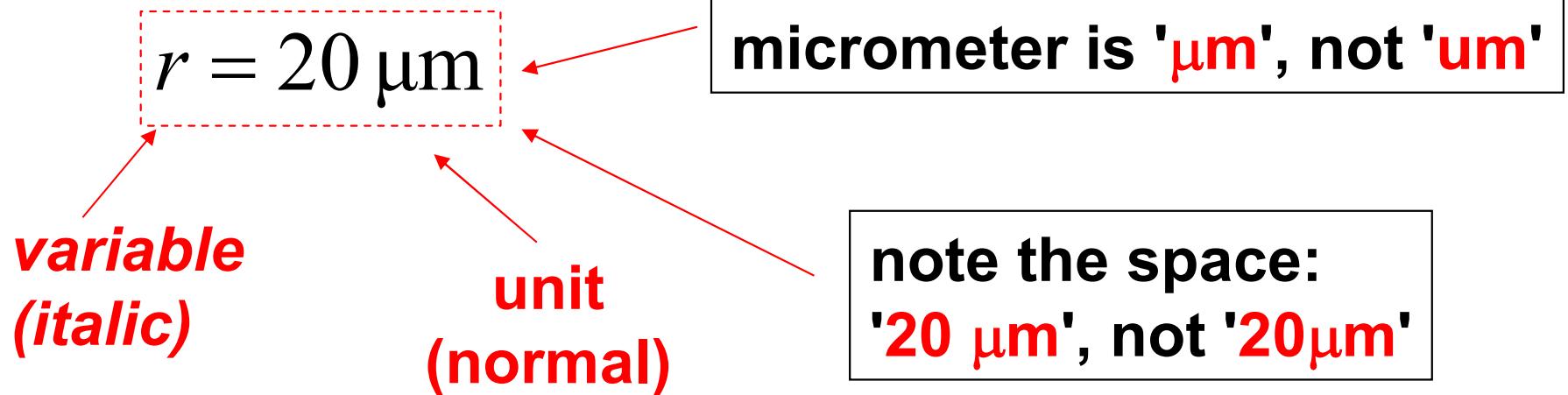
www.vocabularypage.com #vocabpage

# Punctuations ?

- Birds fly \_ but fish swim. comma ,
- Birds fly \_ however, fish swim. period .
- Birds fly \_ However, fish swim. semi-colon ;
- His theory \_ in my opinion \_ is wrong. colon :
- There are three kids \_ Tom \_ Tim \_ and Bob.
- There are three kids \_ Tom is from USA \_ Tim is from UK \_ and Bob is from France.

# Special symbols

- Math types
  - use professional equation editors



- Greek symbols
  - 'symbol' font in MSWord
  - abcdef ... ->  $\alpha\beta\chi\delta\epsilon\phi$  ...



# Special symbols

- -, –, —, —
  - - hyphen            solid-state physics
  - – minus             $x - y = z$
  - – en dash          Albert Einstein (1879–1955), page 1–5  
current–voltage curve
  - — em dash         Albert Einstein—a great scientist
  - Lennard-Jones potential, Fermi–Dirac distribution
  
- do not confuse English and Chinese symbols
  - 电子, 光子            full-width characters (全角字符)
  - electrons, photons.    half-width characters (半角字符)

# *Italic fonts*

---

- **Emphasis**

- This is the most important part.
- This is *the* most important part

- **Math variables / symbols**

- $a^2 + b^2 = c^2$

- **Book or paper title**

- Einstein's paper *On the Electrodynamics of Moving Bodies*

- **Latin phrases**

- *et al., per se, in vivo, ...*

- **中文不用斜体字**

# Latin Phrases

---

- *per se*                      **intrinsically**
- **e.g.**                              **for example**
- **i.e.**                                **that is**
- **p.s.**                                **in addition**
- *in vivo*                        **in living animals**
- ...

# Citation Format

---

- Follow the journal standard format
- Citation
  - [1], [2], ...
  - [Author, Year]
- Reference
  - author, title, journal, volume, page, year, ...

X. Sheng, *et al.*, *Laser & Photon. Rev.* 9, L17 (2015)

X. Sheng, *et al.*, *Laser & Photon. Rev.* 2015, 9, L17

...

# Citation Format

---

- Cite references correctly

**[10] studies the Hall effect in semiconductors.**



**The Hall effect in semiconductors has been studied previously [10].**



**Zhang, *et al.* studied the Hall effect in semiconductors [10].**



# Reference Management

---

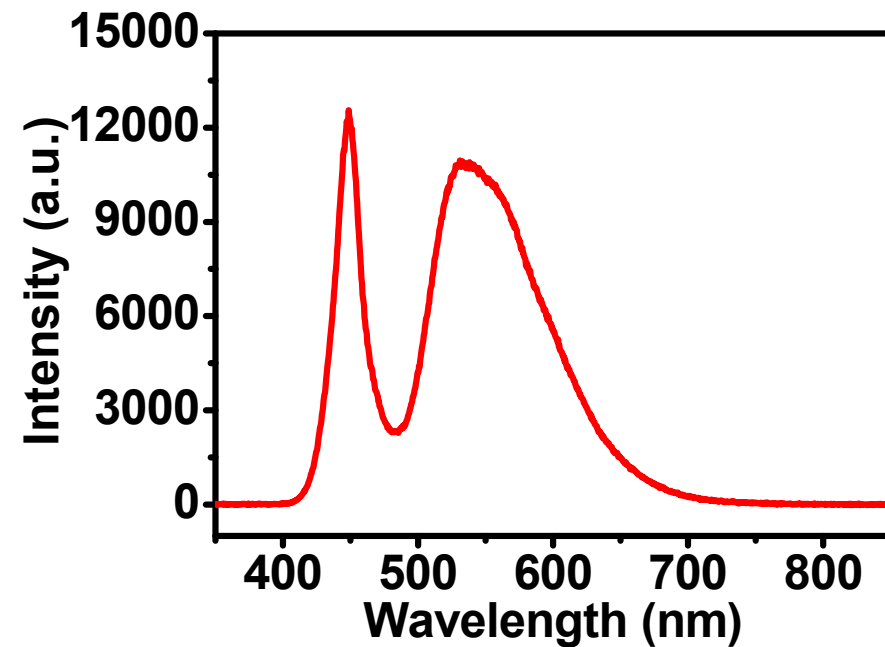
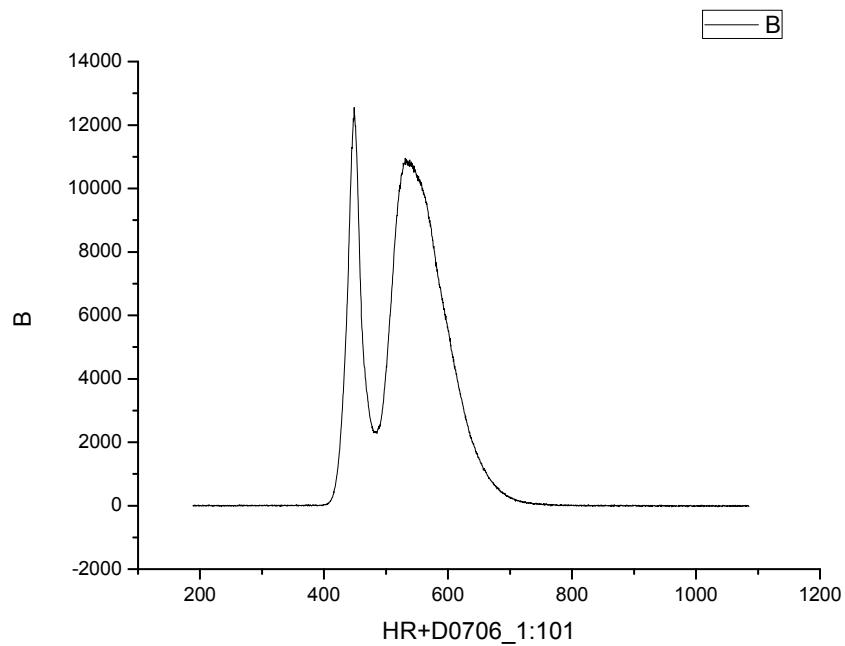
- **Endnote**
- **Mendeley**
- ...

# Data Preparation

---

- Matlab
- Origin
- Excel
- ...
- ***NEVER falsify or manipulate images / data***

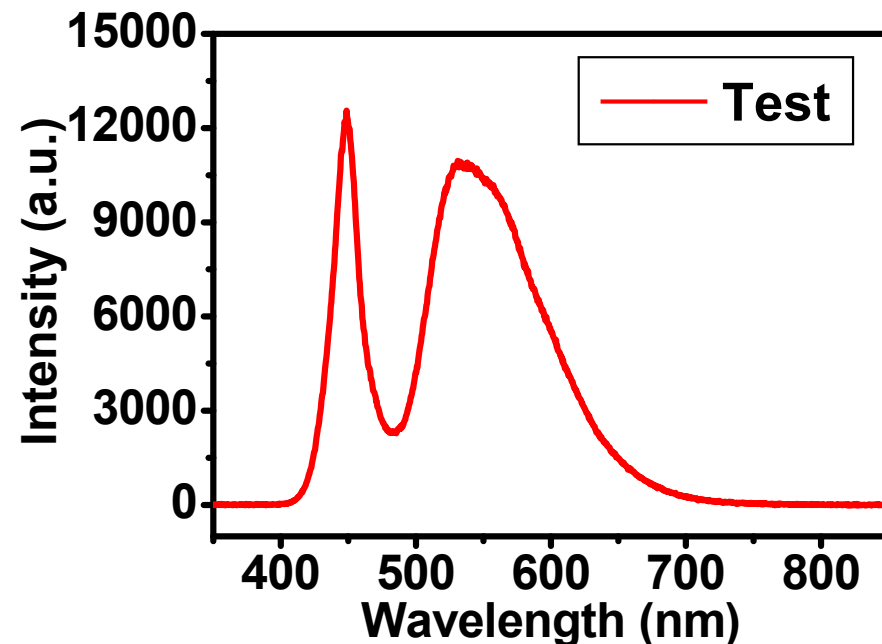
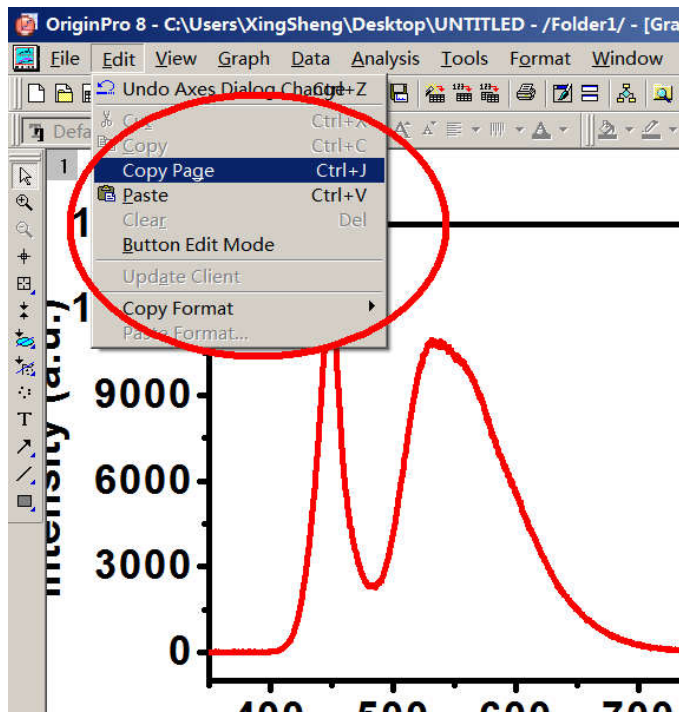
# Data Plot



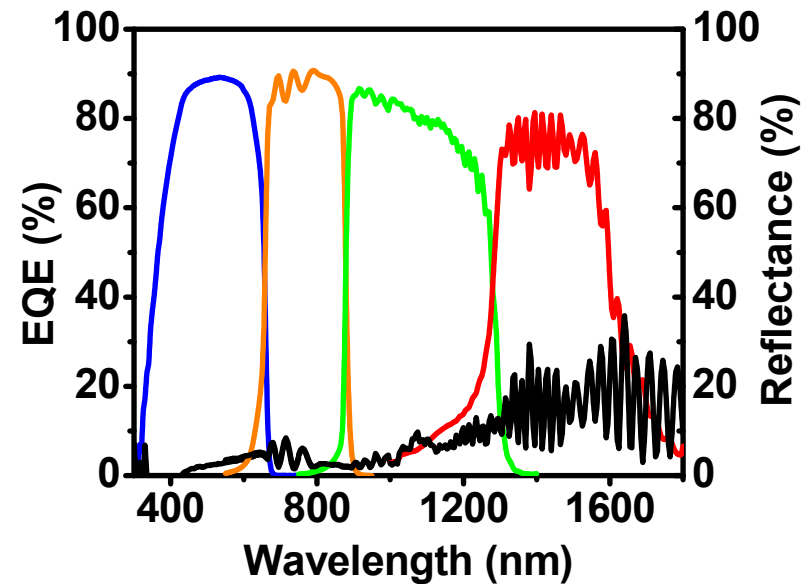
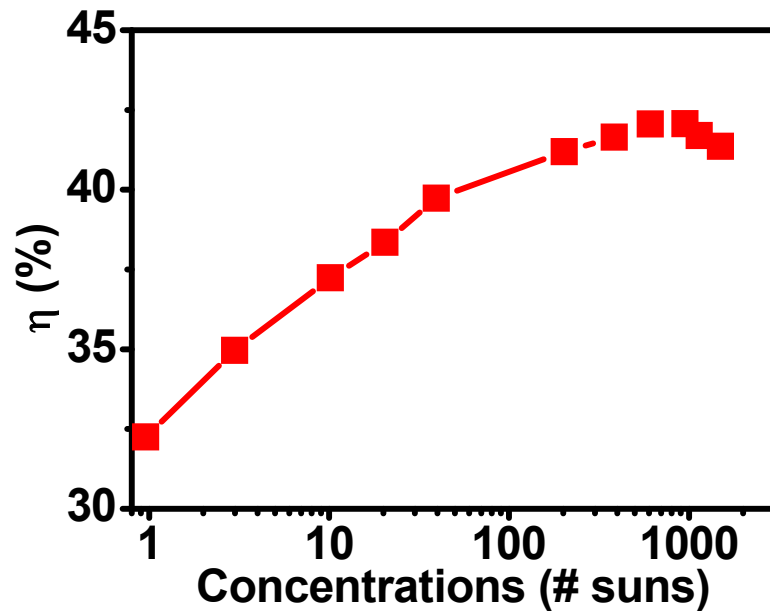
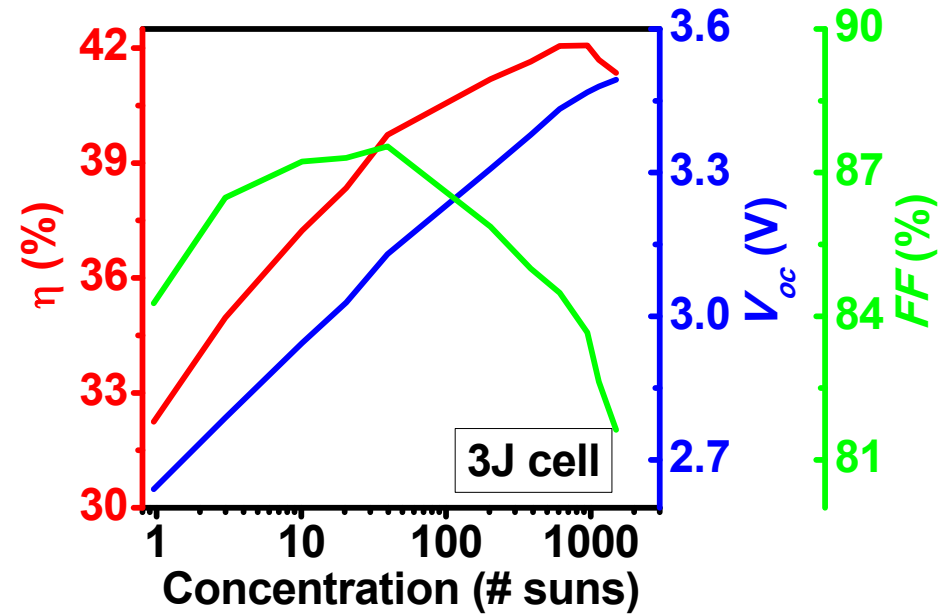
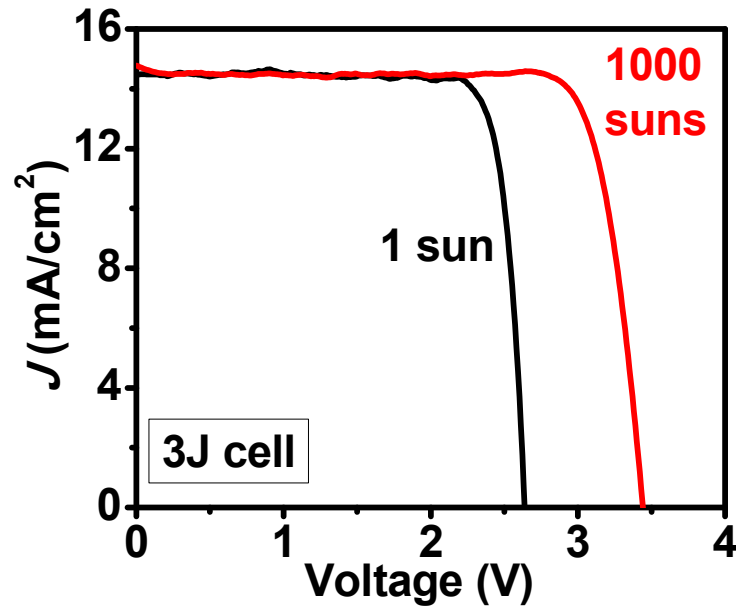


# Data Plot

- Copy the page into PPT, so you can directly edit the plot by double clicking it in PPT
- You can add more text in PPT



# Some Examples



# Image Process

---

- Photoshop
- ImageJ
- Matlab
- ...
- ***NEVER falsify or manipulate images / data***

# Vector graphs vs. Bitmap graphs

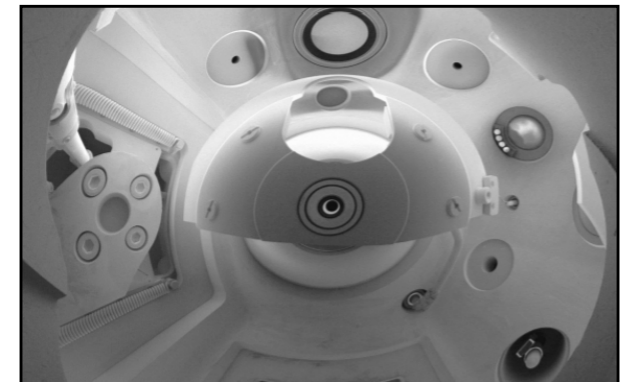
- **vector graphs**

- emf, wmf, eps, ...
- used for data plot, texts, drawings, ...

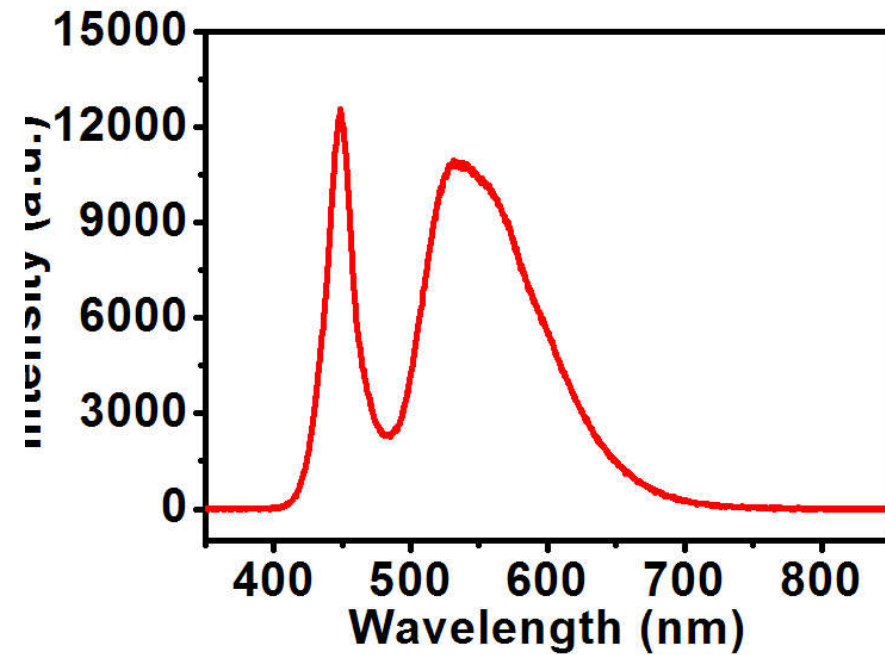
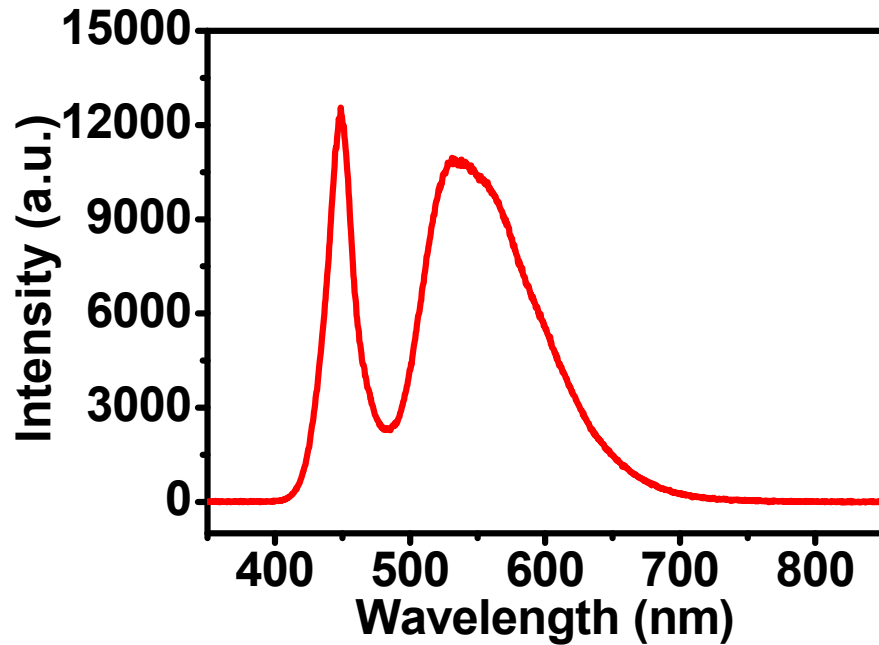


- **bitmap graphs**

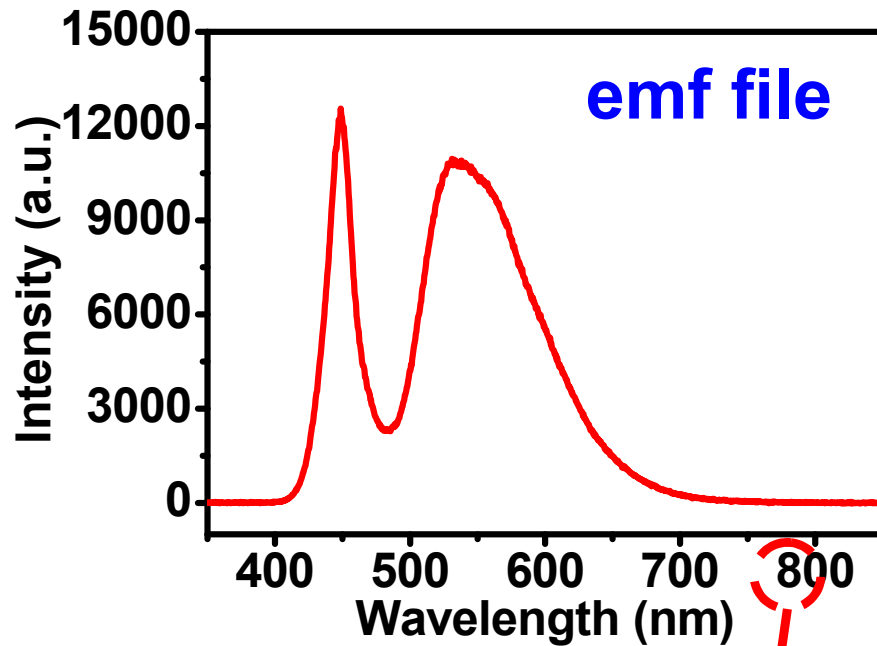
- jpg, png, tiff, ...
- used for photos, images, ...



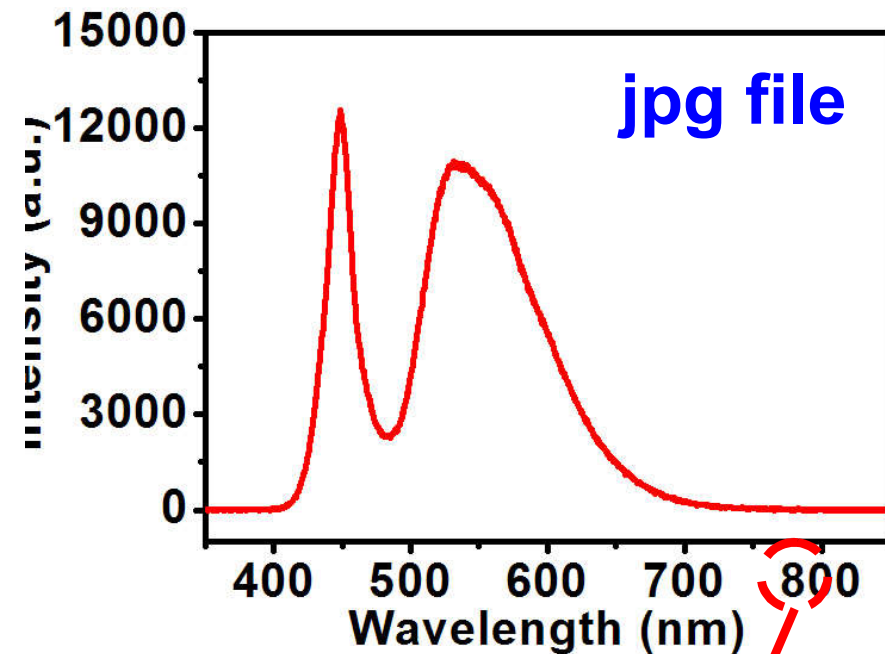
# Vector graphs vs. Bitmap graphs



# Vector graphs vs. Bitmap graphs



vector graph



bitmap graph

# Image Adjustment

---



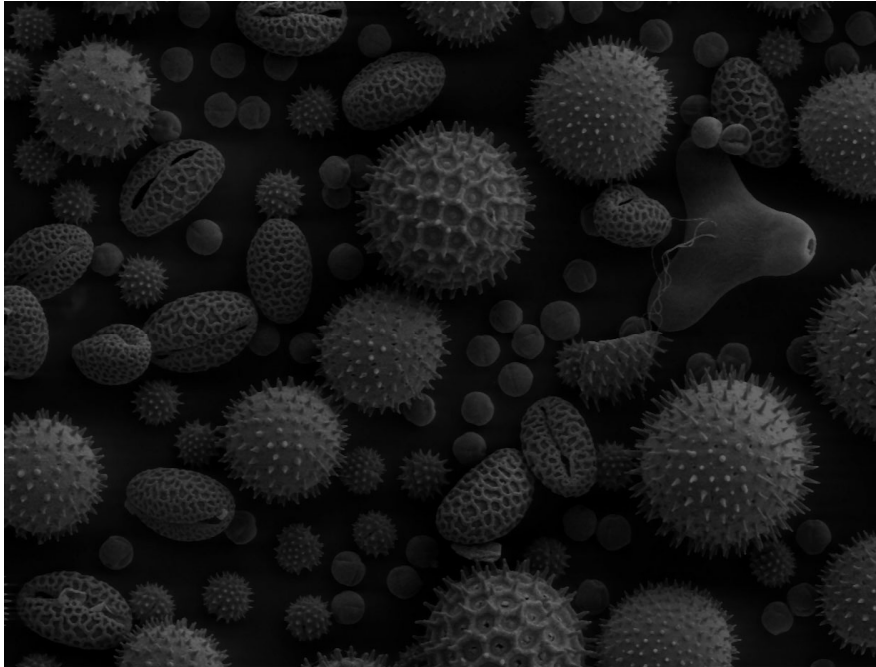
# Image Adjustment



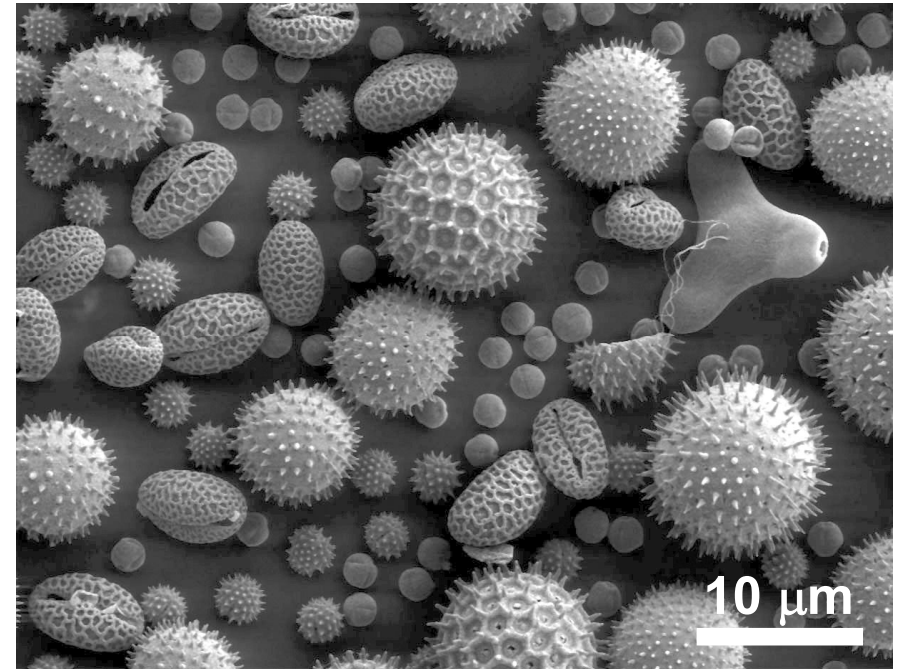
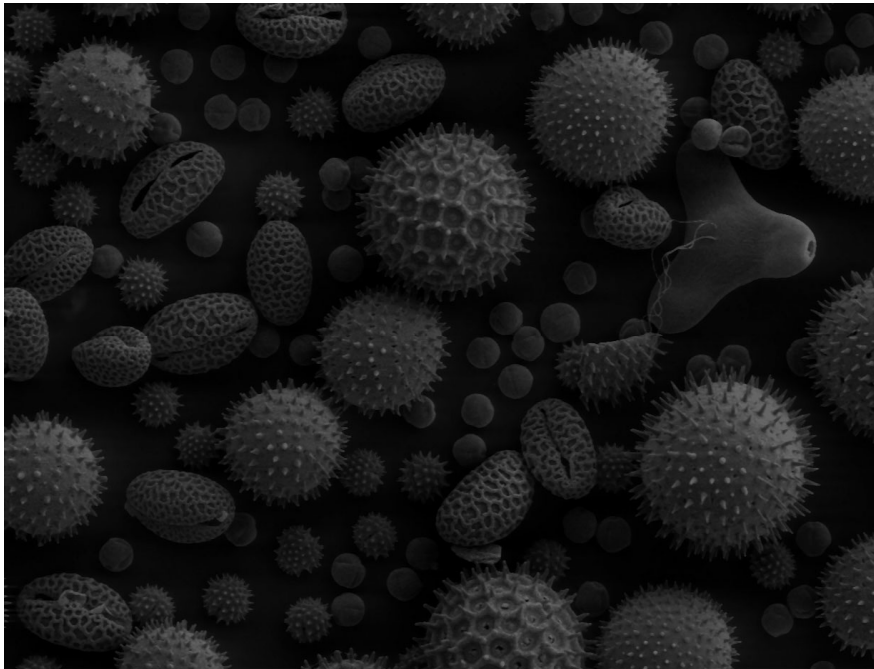


# Image Adjustment

---



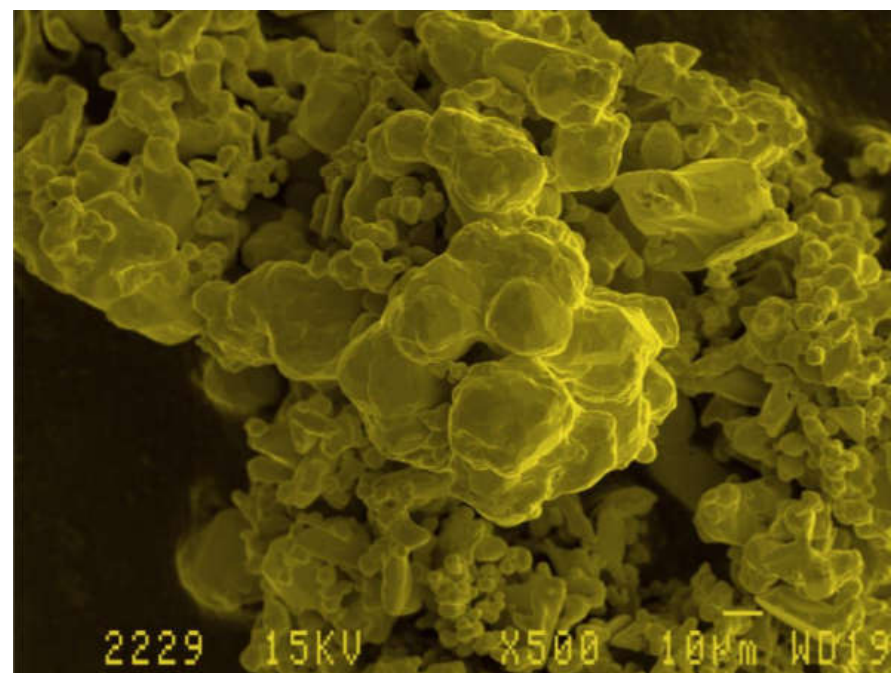
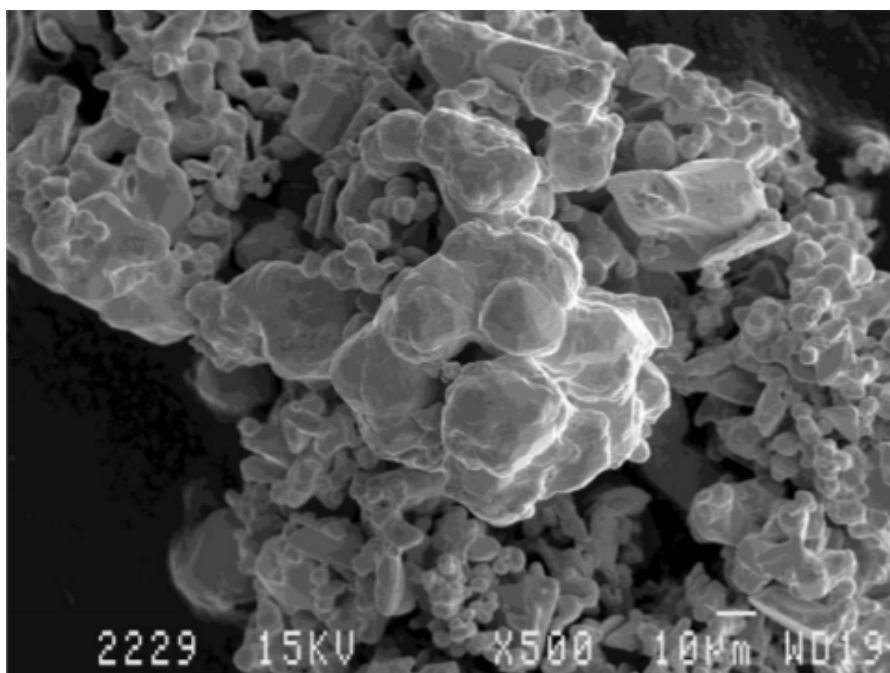
# Image Adjustment



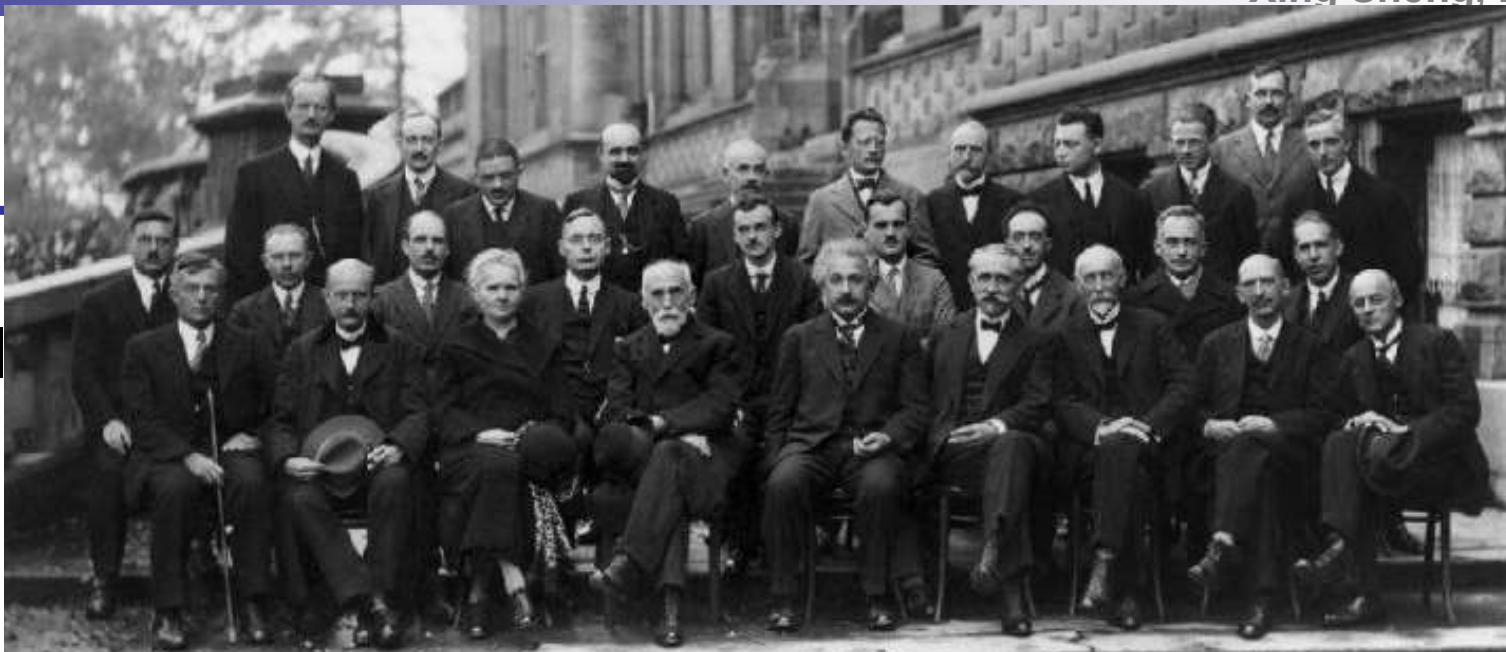
**scale bars are needed  
for microscopic images**

# Image Adjustment

- Colorize greyscale image
  - 'False Color'



■ Col

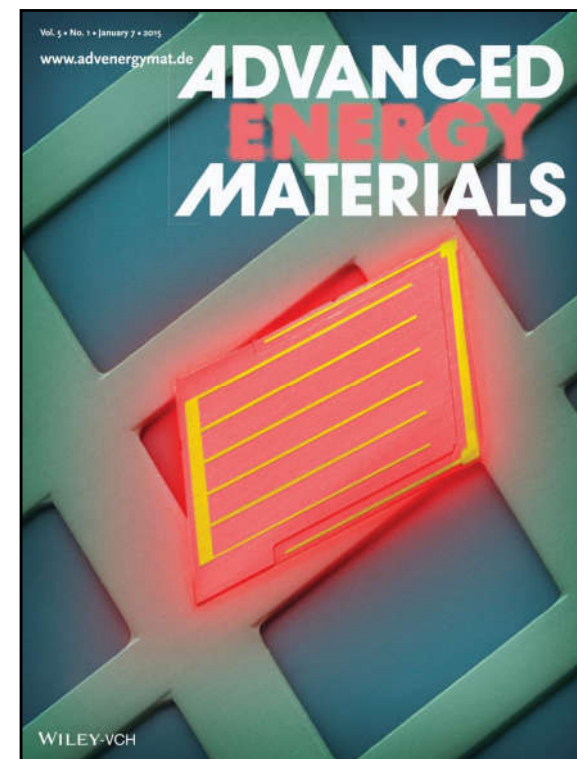
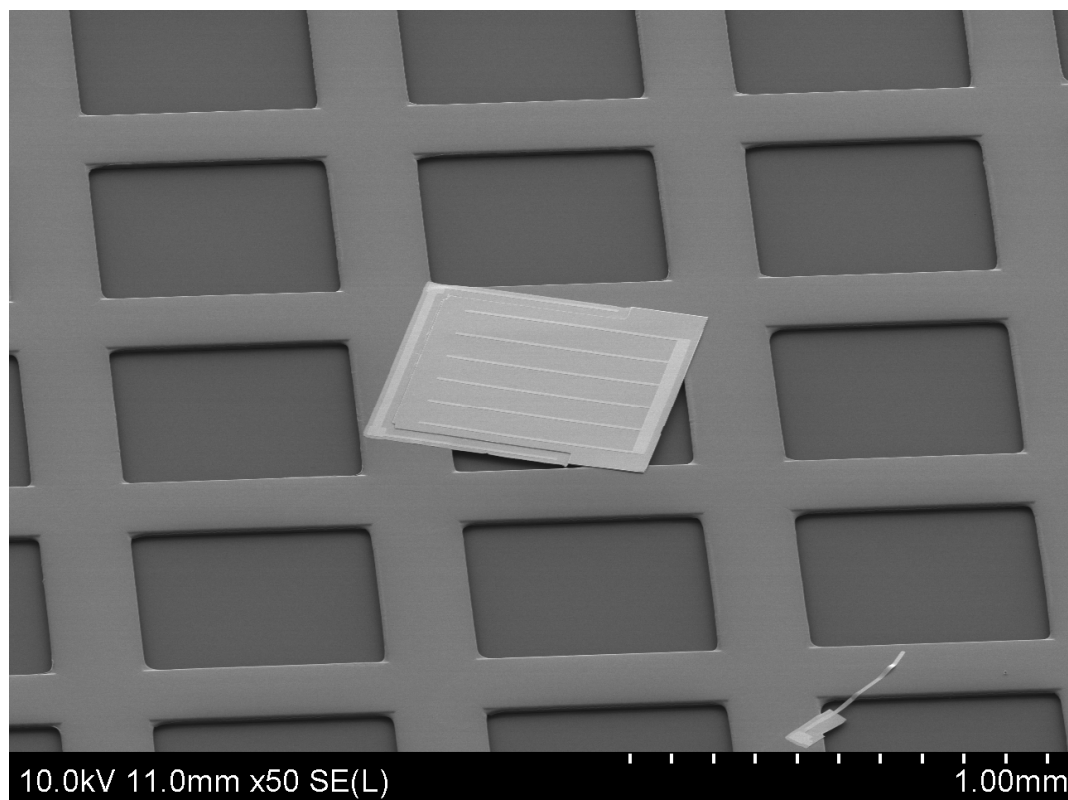


Solvay Conference, 1927



# Cover Arts

- You have more freedom to decorate the images



# Cover Arts

- You have more freedom to decorate the images

